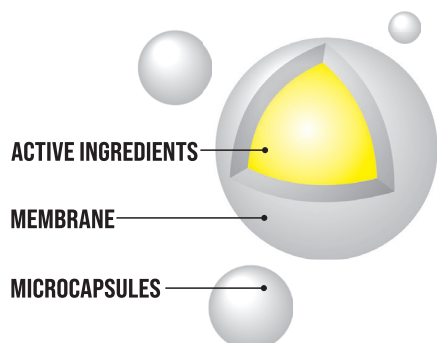


# Effect<sup>®</sup>

## MICROENCAPSULATED INSECTICIDE MICROTECH CS PRO



### MICROENCAPSULATED INSECTICIDES ARE SUITABLE ESPECIALLY FOR CRAWLING INSECTS CONTROL.

The primary reason for microencapsulation is for sustained or prolonged release of active ingredient. This technique has been widely used for targeted delivery of the actives, reducing mammalian toxicity and increasing safety to non-target organisms. The actives, such as natural pyrethrum, which are sensitive to sunlight or moisture can be stabilized by microencapsulation. As there is controlled release from capsules, fewer treatments are needed and that is why the product is also more user friendly.

### EFFECT MICROTECH CS PRO IS NON-SYSTEMIC INSECTICIDE WITH CONTACT AND STOMACH ACTION, BASED ON A COMBINATION OF THREE DIFFERENT ACTIVE SUBSTANCES.

All three active ingredients interact and improve product effectiveness. Product has been formulated using microencapsulation technology to provide a product designed specifically for the urban and household environment. A contact insecticide is especially effective against crawling insects. It is meant for the control of cockroaches (*Blatella germanica*, *Blatta orientalis*) and ants (*Lasius niger*). The microcapsules are in a diameter from 5 to 15µm and are obtained by the process of polymerisation.

THE SIZE OF THE MICROCAPSULES ENABLES THEM TO STICK ON THE INSECT BODY SO THAT THEY LATER CARRY THEM INTO THEIR NEST OR HARBOURAGE, THUS CAUSING THE ENTIRE INSECT POPULATION TO BE ERADICATED.

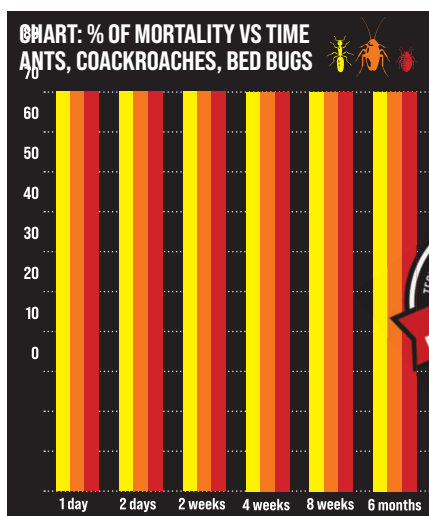


The role of the microcapsule wall is to slowly release the active substances on the treated surfaces. They slowly degrade when exposed to air. At the same time, the microcapsules protect the active substances from the environmental conditions like heat and moisture. This mode of action, the size of the microcapsules and their wall thickness enable a gradual and even release of the active ingredients, which ensures the product is effective up to six months on the treated surfaces (even on porous surfaces). The majority of the active substances are inside the microcapsules, except 2% that is in the space between the capsules, which ensures fast action. Due to the added synergist the microcapsules in Effect Microtech CS do not sink over time but remain evenly distributed.

It is most important to remember that having the right formulation is key to the long-lasting, and effective protection against insects while working to minimise risks.

### MICROTECH CS PRO ACHIEVES AN EXTREMELY LONG-LASTING EFFECT FOR UP TO 6 MONTHS.

Microtech CS PRO is used to control crawling pests, such as cockroaches (*Blatella germanica*, *Blatta orientalis*), ants (*Lasius niger*) and bed bugs (*Cimex lectularius*), in places where crawling pests appear/move – along wall cracks, along the lower edges of indoor walls and furniture. Moreover, the product can also be used on the exterior walls of buildings. The effectiveness of the Microtech CS PRO product is visible within the first 24 hours.



Dilution: 25 ml / 5 l water. Tested on non-porous surfaces.



**100%  
EFFICIENT  
UP TO 6 MONTHS**

Use bioicides safely. Always read the label and product information before use.